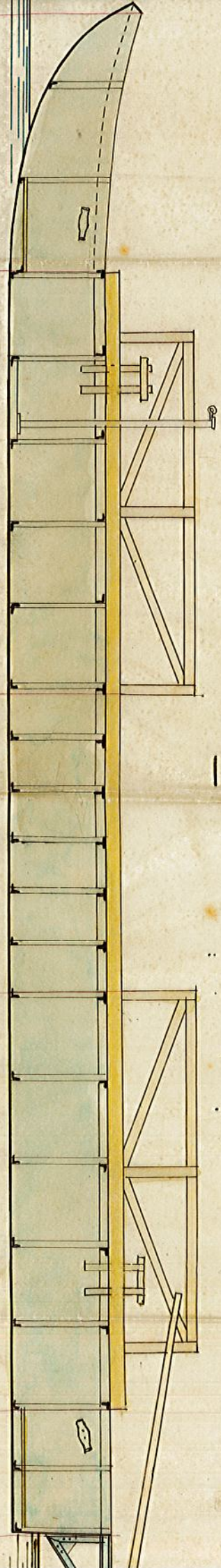


Projet d'un Bac à traile pour la commune de Billieux (Ain)

— Ech. 0,02 —



2,550

4,075

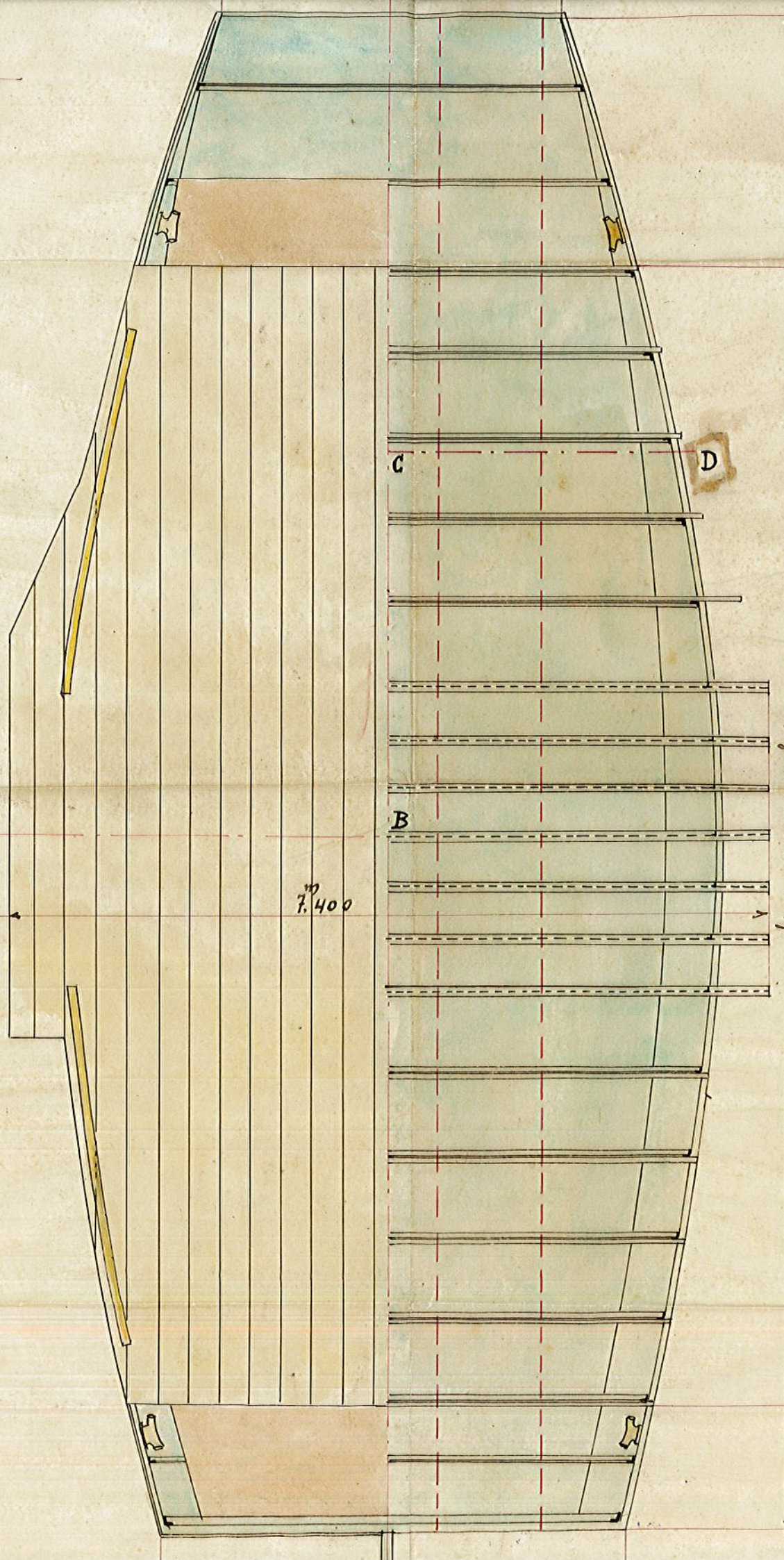
2,850

4,075

4,150

11,000

longueur totale 14,700



C

D

B

A

7,400

7,400
6,400

— Coupe ABCD —
Ech. 0,04

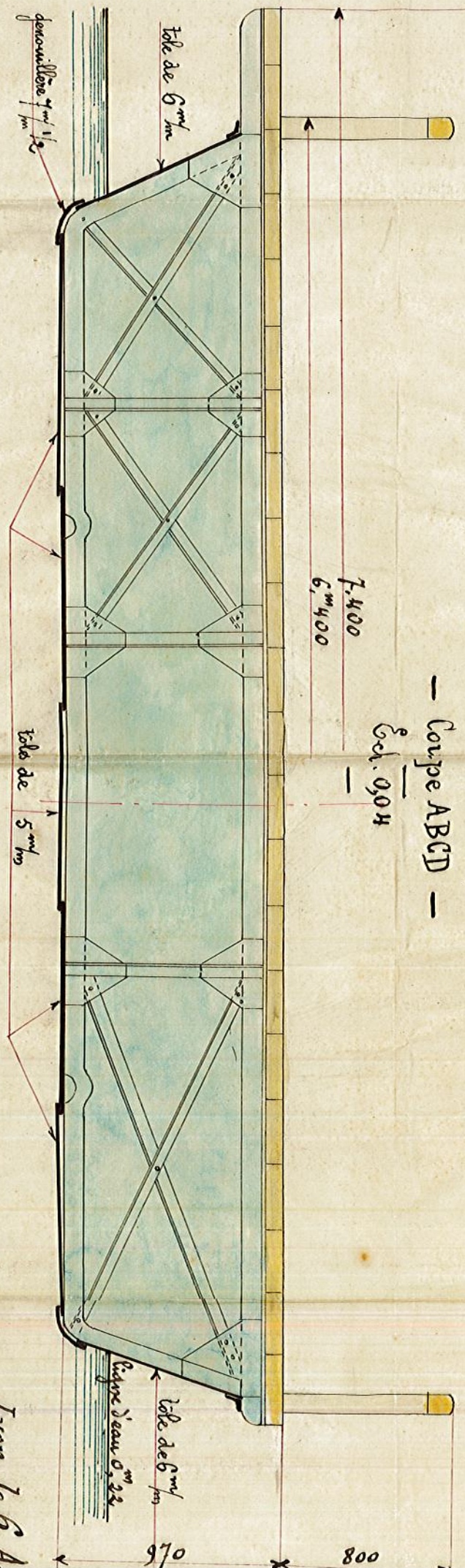


Table de 6 mm
d'ouverture 1 m 1/2

Table de 5 mm

Table de 6 mm
Espace de 0,22

670

800

Lyons, le 6 A
[Signature]